



WASTE MANAGEMENT

314 North Third Street
Silverthorne, CO 80498

Dear Valued Customer,

Recently, Summit County, along with community stakeholders, has examined the issue of glass recycling in our county. After review, the county has recommended removing glass from all single-stream recycling programs.

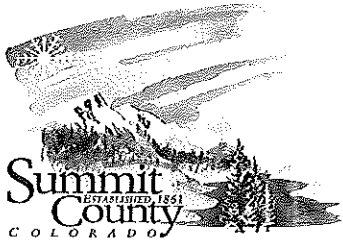
Included with this correspondence is a letter from Summit County to all waste and recycling haulers (other side) which details some of the issues with recycling glass in a single-stream container. Also included is an informational flyer about glass recycling in Summit County. If you have any questions regarding this change with glass recycling, please call the High Country Conservation Center at 970-668-5703.

In support of this recent change, Waste Management urges all Summit County residents, businesses, and visitors to begin utilizing glass drop off centers instead of placing glass in your recycle container.

We encourage you to bring your glass bottles and containers to our free recycling drop off at 314 North Third Street in Silverthorne.

Thank you,

Waste Management of Colorado



SUMMIT COUNTY RESOURCE ALLOCATION PARK
970-468-9263
PO Box 3789
639 CR 66
Dillon, CO 80435

Dear Haulers,

Beginning immediately, we want to transition to glass-free single stream and we will be getting that message out to the public multiple times over the next few months. To do this successfully, we will need your help in educating your customers and encouraging them to recycle their glass at the drop-off centers around the County. If any of you are interested in providing glass collection services for those who desire it, whether commercial or residential, we would love to hear about it and can offer assistance in getting the word out to those who inquire. We appreciate your support as we move forward with this recent change in our single stream guidelines. We recommend the following steps to reduce contamination, encourage “bottle-to-bottle” recycling and to increase the value of these commodities in the single stream process.

Remove Glass from Single Stream

- Increases commodity pricing by reducing glass in single stream that contaminates other commodities, particularly paper and cardboard
- Reduces operating cost by extending wear on equipment.
- Increases glass volumes to help offset costs.
- Reduces glass for Front Range processors (MRF's) to help with their operating cost.
- Saves landfill airspace.

Support Bottle-to-Bottle Recycling

- Glass recycling does pay back if it is being recycled “bottle-to-bottle.”
- Knowing that your glass is truly being made back into another bottle through the Rocky Mountain Bottling Plant in Golden
- Glass chards (cullet) is extremely difficult to recycle after going through the single stream because of contamination from ceramic, leaded glass and other non-glass items
- Glass recycling options are readily available here in Summit County. Glass is free at all of these locations as long as it is clean and free of any contaminants.
 - Breckenridge - CR 450 recycling drop-off center.
 - Frisco – County Commons recycling drop-off center.
 - Silverthorne – Waste Management, during operational hours.
 - Summit Cove – elementary school parking lot, alley cat trailer.
 - Dillon - Town Hall parking lot, alley cat trailer.
 - Summit County Resource Allocation Park (SCRAP), during operational hours.

Respectfully,

Aaron Byrne
Solid Waste Director



Summit County Curbside Single-Stream Recycling Guidelines



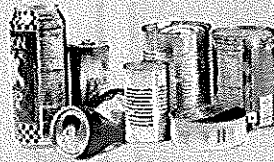
Also known as comingled or unsorted recycling, single-stream recycling allows customers to throw all of their recyclables into one bin and is generally collected at the curb by a local waste hauler.

Curbside Single-Stream Recycling

All of these recyclables can go into one cart...



Plastic #1 - #7 Bottles & Tubs



Aluminum & Tin Cans



Newspaper, office paper, magazines, cardboard & paperboard



Dairy & Juice Containers



NO GLASS in Curbside Single-Stream Recycling!



Why is glass no longer accepted in single-stream?

- 1 Glass in the single stream process gets crushed and contaminates other recycled items, particularly paper and cardboard.
- 2 Glass can't be recycled after going through the single-stream process because of additional contamination from ceramic, leaded glass, and other non-glass items.
- 3 Removing glass from single-stream recycling reduces recycling costs and helps create a more self-sufficient program.

Recycle your glass bottle-to-bottle at our drop-off centers...



More info at highcountryconservation.org or call 970-668-5703.



Summit County Recycling Drop-Off Centers

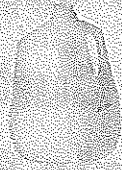


Drop-Off Center Recycling Guidelines

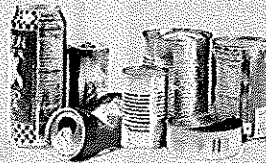
Please sort recyclables into the following bins...



Plastic
Bottles #1



Plastic
Bottles #2



Aluminum & Tin Cans



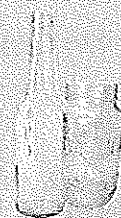
Mixed Paper,
Newspaper, &
Magazines



Cardboard &
Paperboard
(cereal boxes)



Mixed
Glass

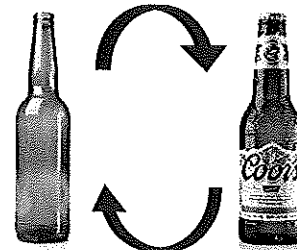


Clear
Glass



Bottle-to-Bottle Recycling!

- 1 Source-separated recycling has participants sort glass, paper, and plastic in separate containers.
- 2 Glass collected at drop-off centers goes directly to MillerCoors in Golden to be made into new glass bottles.
- 3 Source-separated glass is true "bottle-to-bottle" recycling.



Recycling Drop-Off Center Locations:



Frisco - Next to Colorado State Patrol at the County Commons, off HWY 9 just south of Frisco; open 24/7.



Breckenridge - County Rd 450, at the corner of 7-Eleven on the north side of town, 1/4 mile on the left; open 24/7.



Dillon - Dillon Town Hall parking lot, U.S. HWY 6, turn on to Lake Dillon Drive, 1/4 mile on left; open M-Sun, 7:00am-10:00pm.



Summit Cove Mobile Trailer - North parking lot at Summit Cove Elementary School; first week of every month.



Silverthorne - Waste Management drop off center, 314 Third Street; open M-F 8:00am-5:00pm.



More info at highcountryconservation.org or call 970-668-5703.